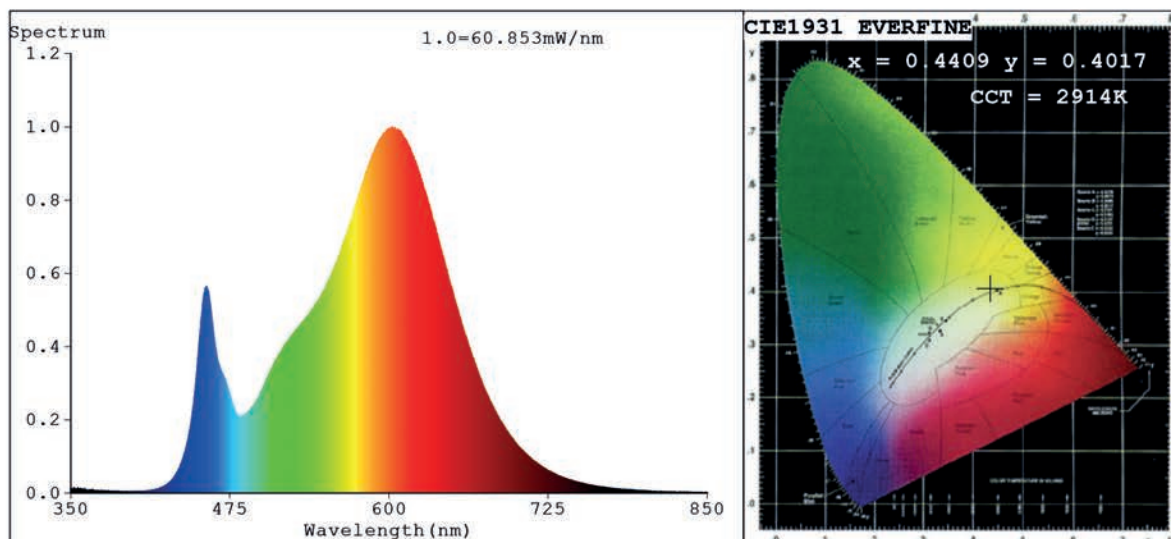


Spectrum Test Report



Color Parameters:

Chromaticity Coordinate: $x=0.4409$ $y=0.4017$ $u'=0.2542$ $v'=0.5210$
 CCT=2914K (Duv=-0.0015) Dominant WL:Ld =583.7nm Purity=52.9%
 Ratio:R=23.5% G=73.8% B=2.8%;;Peak WL:Lp=602.6nm FWHM=115.4nm
 Render Index:Ra=81.1 CRI=75.9 TM30:Rf=80 Rg=94
 R1 =80 R2 =93 R3 =93 R4 =77 R5 =81 R6 =91 R7 =79
 R8 =55 R9 =1 R10=84 R11=76 R12=72 R13=84 R14=97 R15=72

Photo Parameters:

Flux = 2853 lm Eff. : 146.08 lm/W Fe = 8.668 W

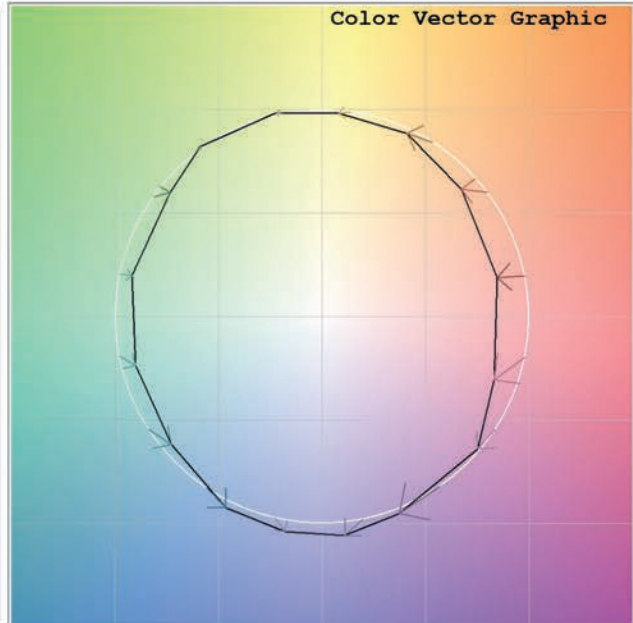
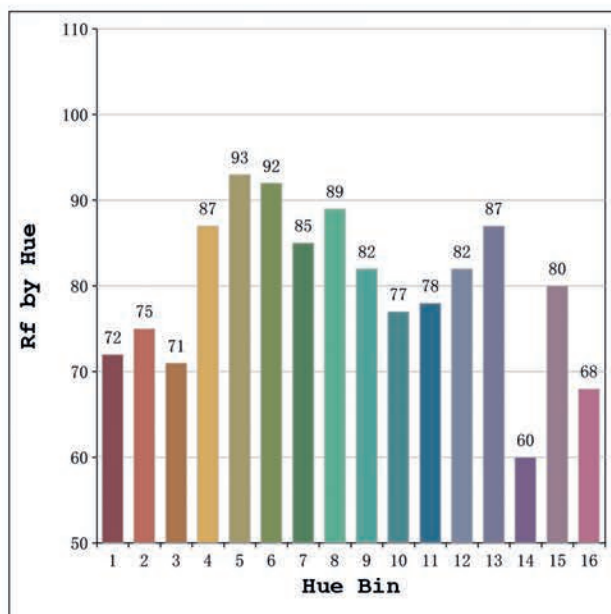
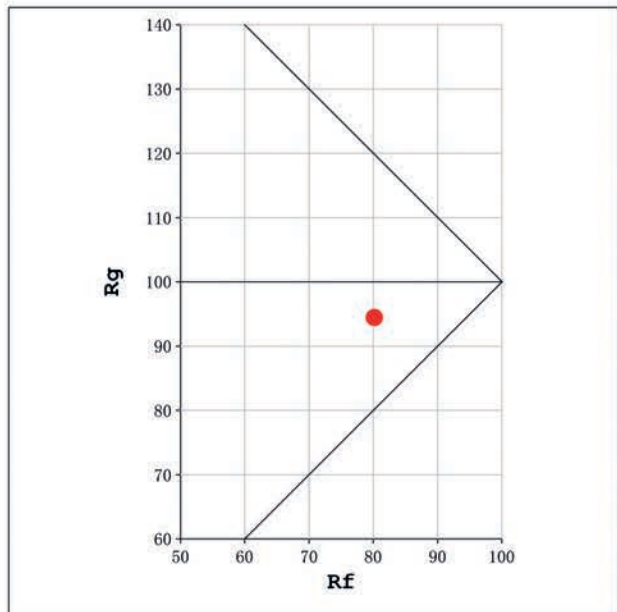
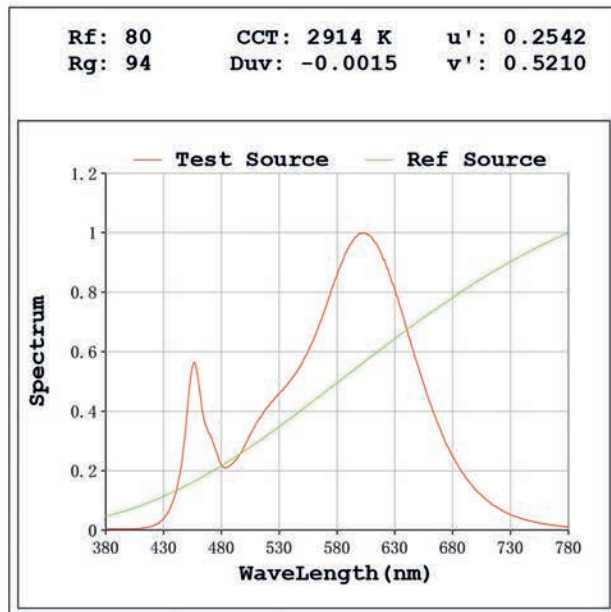
Electrical parameters:

V = 11.998 V I = 1.628 A P = 19.53 W PF = 1.000

Status: Integral T = 418 ms Ip = 50800 (78%)

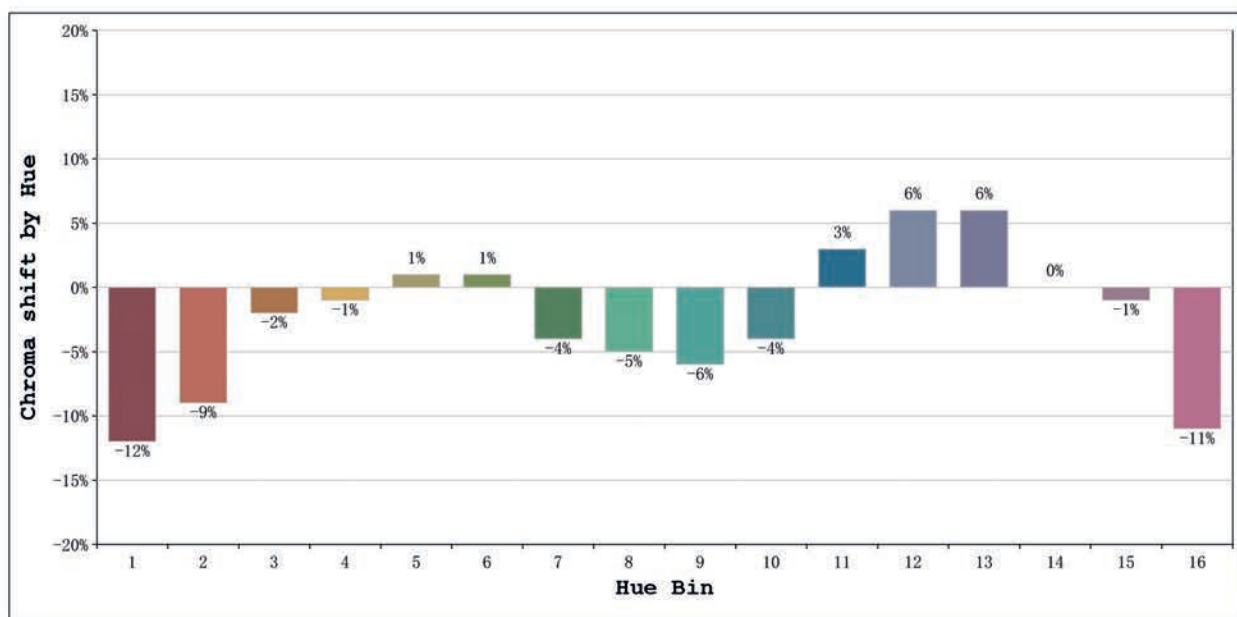
Model:Ecoled Benidorm 3000k
 Tester:Sergio Carneros
 Temperature:20Deg
 Manufacturer:Luz Negra

Number: 30.116
 Date:2025-06-17 10:08:05
 Humidity:50%
 Remarks:100cm de tira flexible



Model:Ecoled Benidorm 3000k
 Tester:Sergio Carneros
 Temperature:20Deg
 Manufacturer:Luz Negra

Number: 30.116
 Date:2025-06-17 10:08:05
 Humidity:50%
 Remarks:100cm de tira flexible



			Graphic shift(%)	
Hue Bin	Hue Angle	Rf	Chroma	Hue
1	0.0° - 22.5°	72	-12	2
2	22.5° - 45.0°	75	-9	8
3	45.0° - 67.5°	71	-2	13
4	67.5° - 90.0°	87	-1	5
5	90.0° - 112.5°	93	1	3
6	112.5° - 135.0°	92	1	-1
7	135.0° - 157.5°	85	-4	-5
8	157.5° - 180.0°	89	-5	0
9	180.0° - 202.5°	82	-6	6
10	202.5° - 225.0°	77	-4	12
11	225.0° - 247.5°	78	3	13
12	247.5° - 270.0°	82	6	6
13	270.0° - 292.5°	87	6	-9
14	292.5° - 315.0°	60	0	-22
15	315.0° - 337.5°	80	-1	-11
16	337.5° - 360.0°	68	-11	-13

Model:Ecoled Benidorm 3000k
 Tester:Sergio Carneros
 Temperature:20Deg
 Manufacturer:Luz Negra

Number: 30.116
 Date:2025-06-17 10:08:05
 Humidity:50%
 Remarks:100cm de tira flexible